

## Three-phase motors Cast iron housing

Type		SC2 250M6-695 AB
Design output	[kW]	37
Design torque	[Nm]	357
Class IE		IE2-92.7%
Efficiency determination		EN 60034-2-1
Duty type		S1
Design frequency	[Hz]	50
Design speed	[rpm]	980
Voltage	[V]	400/690
Connection		D / Y
Current	[A]	66.0 / 38.3
Relative pull-in current		6.9
Relative starting torque		1.9
Relative pull-out torque		3.1
Efficiency 100 / 75 / 50 %	[%]	92.7 / 92.4 / 92.0
Power factor		0.88
Th. cl.		155 (F/B)
Coolant temperature	[°C]	-20°C ... +40°C
Altitude above sea level	[m]	1000
Degree of protection IP		IP 55
Moment of inertia	[kgm <sup>2</sup> ]	0.80700
Motor weight	[kg]	369
Bearing D-side		6314/C3
Bearing N-side		6314/C3
Relubrication interval	[h]	7000
Grease type		ESSO BEACON 3 / SKF LGMT3
Grease amount	[g]	26
A-sound pressure level L <sub>WA</sub>	[dB]	81.0

### Options:

Terminal box	Standard
Position of terminal box	On the top
Cable gland	Brass cable glands
Position of cable entry	Right
Shaft	Standard
Bearing	Relubrication device, heavy bearing arrangement
Special information about the bearing	SKF bearing
Winding protection	1 set PTC resistors
Limit values to vibration velocity	Class A
Balancing	with half key
Colour	RAL 7030

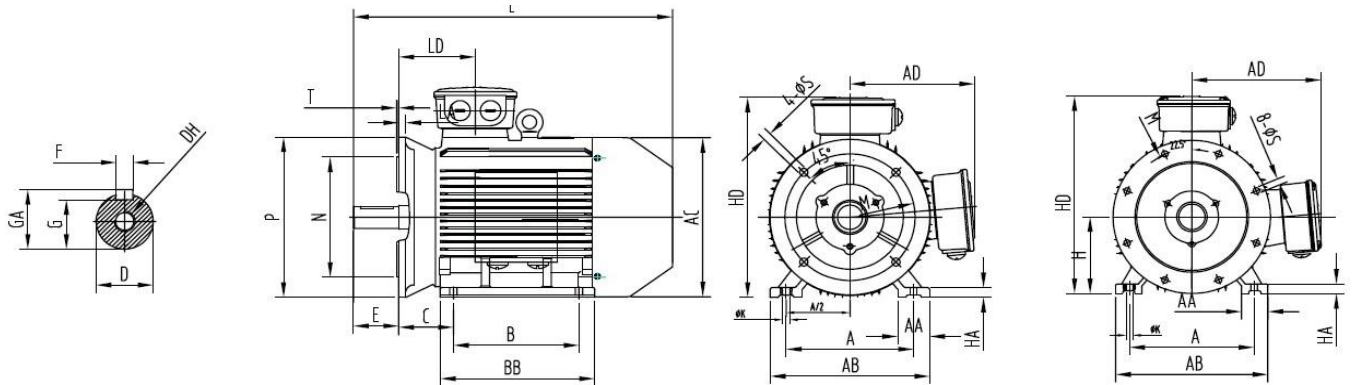
Delivery conditions and/or official regulations	IEC / EN 60034-1
---	------------------

# Data sheet

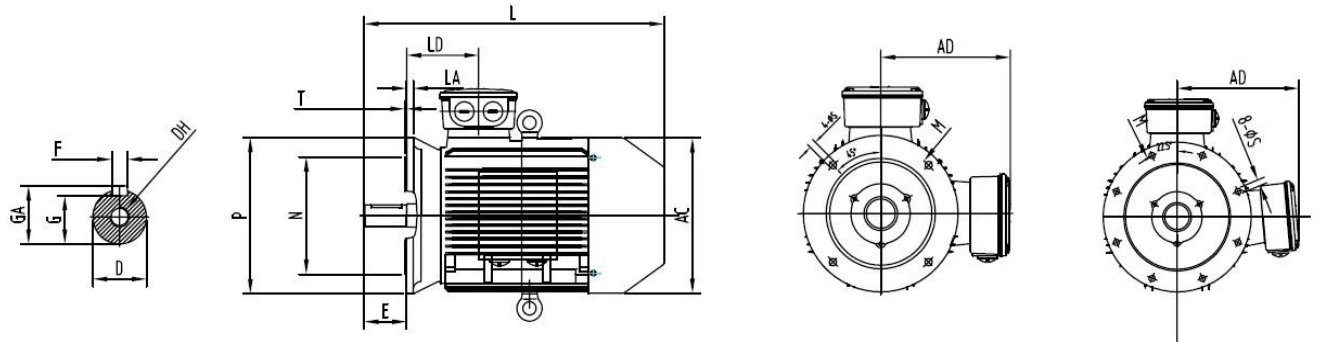
## IM B3



## IM B35



## IM B5



A	B	B <sup>1</sup>	C	D	E	F	G	H	K	DH	GA	AA	AB
406	311	349	168	65	140	18	58	250	24	M20x42	69	80	490

AC	AD	HA	HD	BB	LD	L	M	N	P	S	T	LA
510	380	30	635	445	207	915	500	450	550	8 x ø18.5	5	22